

Prorack Trades
GUTTER MOUNT ROOF RACKS



WORKING HARD

Tradesman Gutter mounted Roof racks

Manufactured from steel with a clip-in rubber insert on the crossbar to help cushion and protect your load and reduce wind noise, the TR series roof racks are available in either black or galvanised finish. Roof racks are sold singly and will accept the full range of Prorack Trade and Technician accessories.

**T-BAR
 SERIES**



Low Leg - 150mm high (supplied singly)
 Part Number: TR1B = (1375mm bar length)
 TR4B = (1500mm bar length)
 TR7B = (1800mm bar length)



Medium Leg - 210mm high (supplied singly)
 Part Number: TR2B = (1375mm bar length)
 TR5B = (1500mm bar length)
 TR8B = (1800mm bar length)



High Leg - 280mm high (supplied singly)
 Part Number: TR3B = (1375mm bar length)
 TR6B = (1500mm bar length)
 TR9B = (1800mm bar length)



Low Leg - 150mm high (supplied singly)
 Part Number: TR1G = (1375mm bar length)
 TR4G = (1500mm bar length)
 TR7G = (1800mm bar length)



Medium Leg - 210mm high (supplied singly)
 Part Number: TR2G = (1375mm bar length)
 TR5G = (1500mm bar length)
 TR8G = (1800mm bar length)



High Leg - 280mm high (supplied singly)
 Part Number: TR3G = (1375mm bar length)
 TR6G = (1500mm bar length)
 TR9G = (1800mm bar length)



Prorack Tradesman roof racks are built to last. The TR system is the perfect rack solution for the hard-working tradesperson. The system is designed to take the knocks in the toughest of working environments and still look good. There are three bar lengths and three leg heights, Low (150mm) Medium (210mm) and High (280mm) with a 50kg per bar load rating to accommodate virtually any load requirement.



FOR THE HARD WORKING TRADE

**T-BAR
SERIES**



Van set up with 3 sets of high leg TR9B Tradesman roof racks & selection of trades accessories

Tradesman Gutter mounted Roof racks

The TR Series Roof rack is the ideal rack system for trade vehicles. The system allows the roof racks to be set up in any desired configuration to meet the exact requirements of the user.

Artificial Rain gutter Part# TAARG

This is a specially designed 'rain gutter' to attach to side of a ute canopy or vehicle without a rain gutter to allow for the installation of a Prorack TR Gutter mount system.

Supplied: as a pair
Gutter width: 153mm



Prorack Trades

TRACK MOUNT ROOF RACKS



GETTING RIGHT ON TRACK

T-BAR
SERIES

Tradesman Track mounted Roof Racks for vehicles without Rain Gutters

The TRT Series, like the Prorack Gutter mount series, is manufactured from steel and contains a rubber in-fill to protect your load and reduce wind noise. There are three leg heights and two bar lengths to choose from. They are available in a black finish. All bars have a 50kg load rating each.



Low Leg - 90mm high

Part Number: TRT1B = (1375mm bar length)
TRT4B = (1500mm bar length)



Medium Leg - 150mm high

Part Number: TRT2B = (1375mm bar length)
TRT5B = (1500mm bar length)



High Leg - 230mm high

Part Number: TRT3B = (1375mm bar length)
TRT6B = (1500mm bar length)



The heavy duty Tradesman range can be fitted to just about any vehicle using this track mount option. The aluminium tracks are permanently mounted to your vehicle's roof using sealed rivets. The roof racks then mount on to these tracks and can be fitted or removed quickly and easily. Prorack TRT range of roof racks can be positioned at any point along the tracks as required to allow for load distribution.



WITH TRACK MOUNT

T-BAR
SERIES



TRT1B Track mount Trades Bars on roof mounted ST14 tracks & selection of trades accessories..

Aluminium Tracks

These stylish roof tracks must be fitted to your vehicle before you can attach any of the TRT range of roof racks.

They also take the S-bar roof racks, as shown on page 9.

Tracks are available in various lengths to suit any vehicle.

- Part Numbers:
- STM = (200mm in length)
 - ST6 = (600mm in length)
 - ST10 = (1000mm in length)
 - ST12 = (1200mm in length)
 - ST14 = (1400mm in length)
 - ST16 = (1600mm in length)
 - ST18 = (1800mm in length)

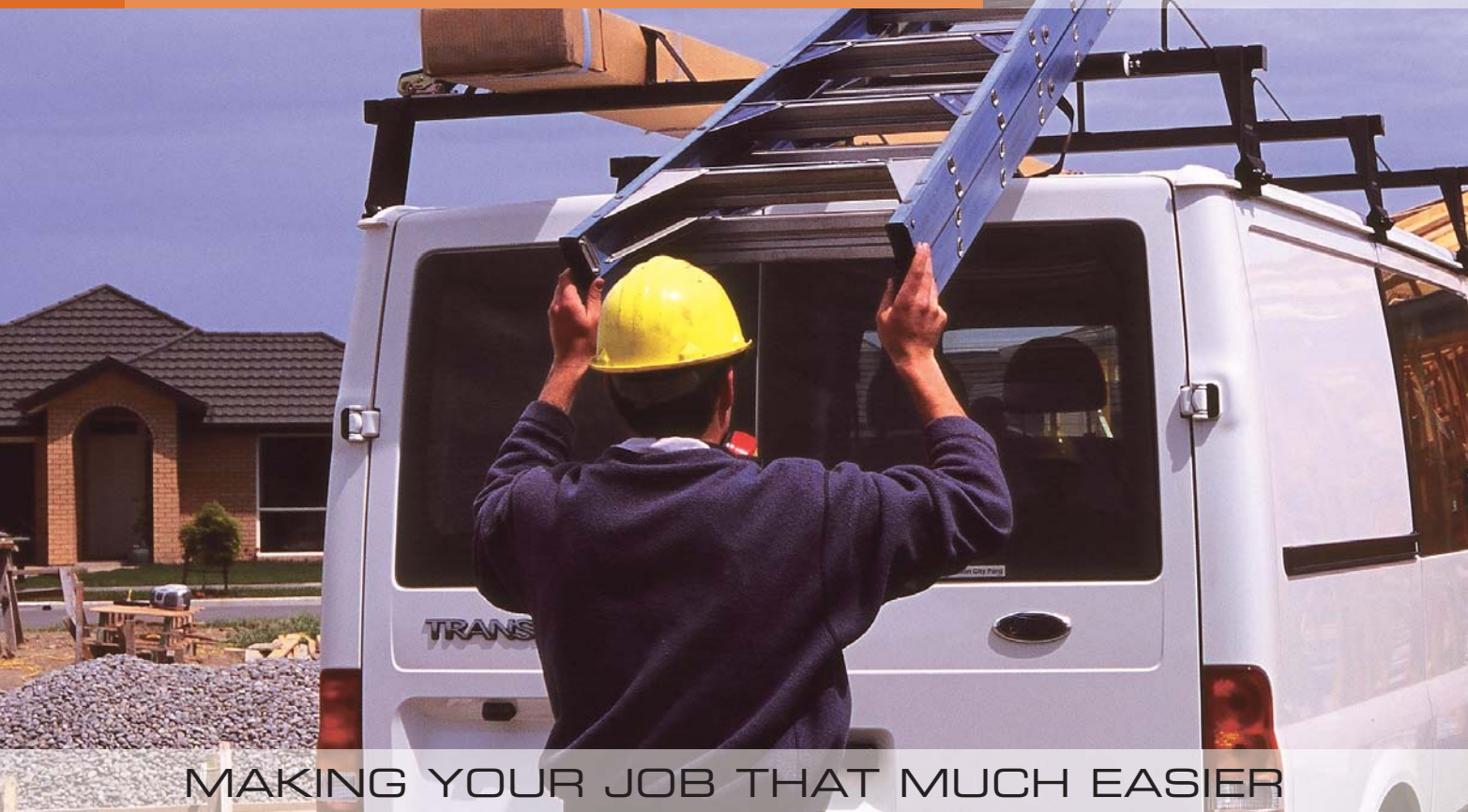
Typical ute & canopy roof rack set up



Close-up of a permanent mount roof track



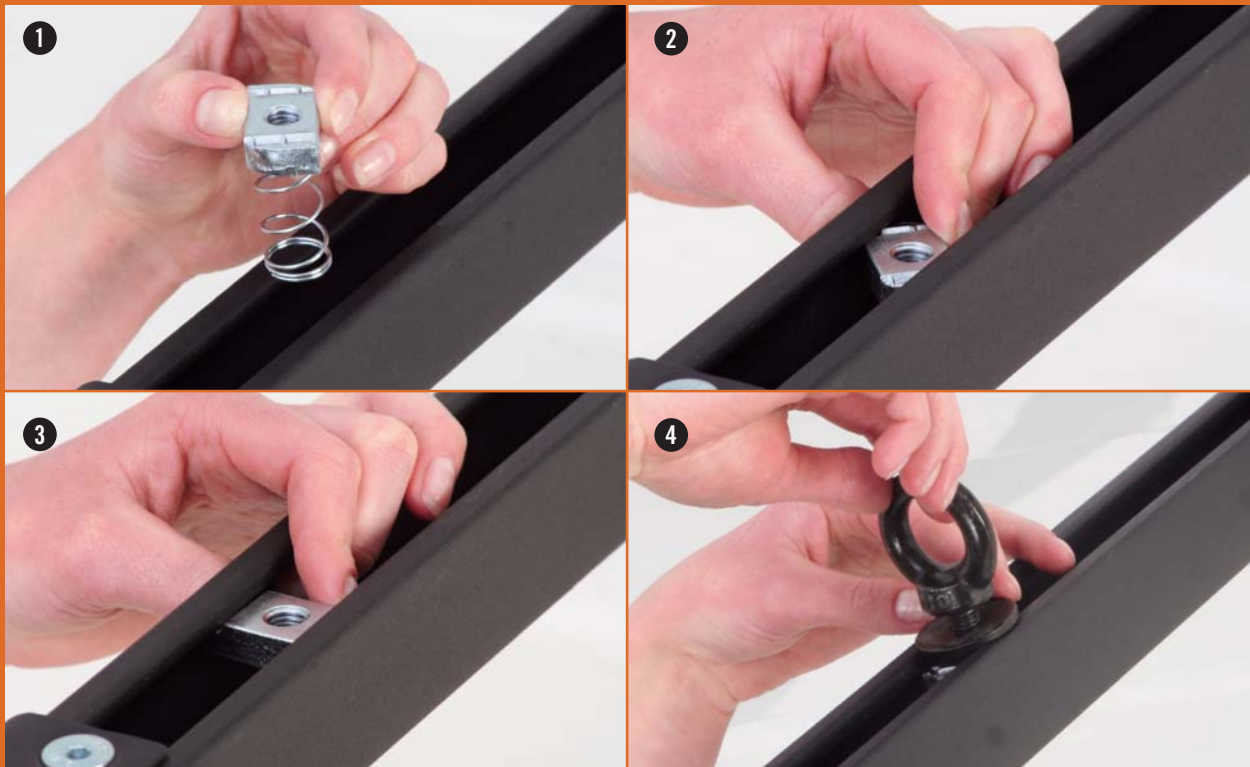
Prorack Trades TRADES ACCESSORIES



MAKING YOUR JOB THAT MUCH EASIER

Prorack Crossbar Mounting System

The Prorack trade bars and accessories have a unique mounting system that allows for easy lateral adjustment while providing you with a secure fixing point. Spring-tensioned nuts stay in place so you can easily attach the required accessory. All parts are made from electro-galvanised steel.



Prorack Trades Accessories transform a basic roof rack system into a multi-tasking storage and transportation package. The accessories themselves are very versatile, allowing the user an almost unlimited range of options to meet any challenge. All accessories are built Prorack tough, so you can rely on them to last and to perform every time you need them to.

1. Load Holder - Part# TALH

Stop your load moving sideways when travelling. Tie down hole at top of bracket.

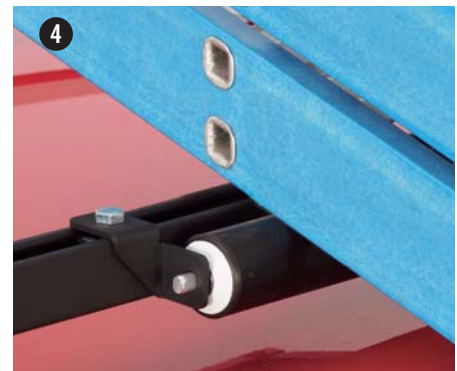
- Solid steel construction
- Supplied as a pair



2. Load Stop - Part# TARLH

Secure anchorage for loads and easy to adjust if required.

- Solid steel construction
- Supplied as a pair

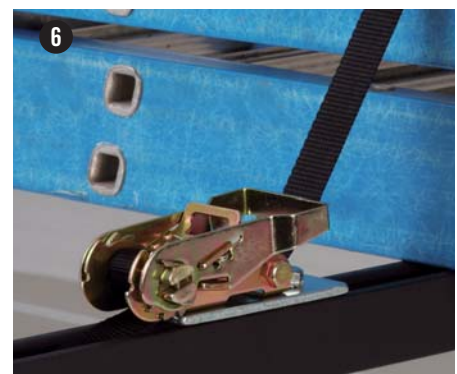


3. Pipe Clamp - Part# TAPC4/6

Great for holding conduit or pipes. Easily adjusted along the crossbar.

- Solid steel construction
- Supplied as a pair

TAPC4 - (holds 100mm diameter conduit)
TAPC6 - (holds 150mm diameter conduit)



4. Ladder Roller - Part# TAR

Protect your crossbars and your back when loading or unloading ladders. Custom built to fit Prorack Trades bars, this is the best way to handle your ladders.

- Solid steel mount, PVC roller
- Supplied singly
- Roller length = 525mm

5. Ladder Strap - Part# TALS

A robust, buckled strap that's easy to use and keeps your ladder/load secure.

- Heavy PVC strap with steel mount
- Supplied singly

6. Ratchet Grab - Part# TARG

The most popular Prorack accessory, mounts to the crossbar and lets you restrain just about anything!

- Supplied singly
- Strap length = 1.85 metres

7. Ladder Peg - Part# TALLP

An easily adjusted tie-down point to suit any load requirement.

- Supplied singly

8. Eye Bolt - Part# TAEB

A handy tie-down point that can be quickly adjusted to suit the load.

- Supplied as a pair

(shown with additional tie down)

9. Ladder Guide - Part# TALG

An easily adjusted flat plastic guide that stops lateral movement and helps to guide your ladder onto the roof rack.

- Supplied as a pair



Prorack Technician TECHNICIAN ACCESSORIES

Prorack Ladder Rail System

This system has been designed as the ultimate ladder-carrying system. The ladder tracks have nylon runners and an end roller to make for smooth, easy loading and unloading. Systems are available for step ladders and for extension ladders. Both feature quick-release securing straps.

SUPPORTING THE TEAM IN THE FIELD

Step Ladder Rail - Part# TS29

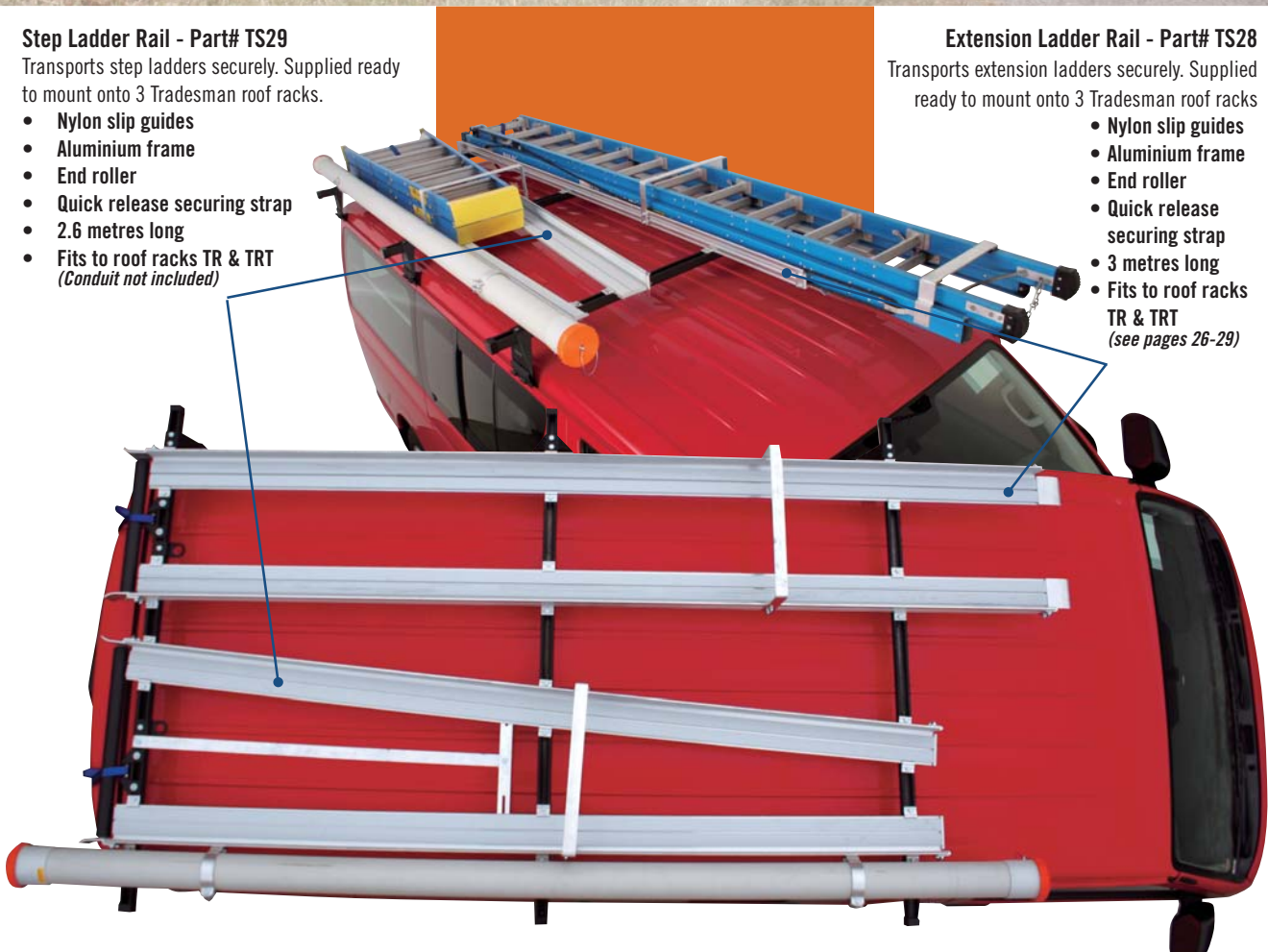
Transports step ladders securely. Supplied ready to mount onto 3 Tradesman roof racks.

- Nylon slip guides
- Aluminium frame
- End roller
- Quick release securing strap
- 2.6 metres long
- Fits to roof racks TR & TRT (Conduit not included)

Extension Ladder Rail - Part# TS28

Transports extension ladders securely. Supplied ready to mount onto 3 Tradesman roof racks.

- Nylon slip guides
- Aluminium frame
- End roller
- Quick release securing strap
- 3 metres long
- Fits to roof racks TR & TRT (see pages 26-29)





Prorack Technician Series features specialised accessories used by Telecommunications, Power Authorities and many other allied trades, particularly those with ladders in constant use.

Prorack Technician customised systems are available in fleet quantities as required.

Prorack Ladder System

No more hassles keeping ladders secure during transport or while loading and unloading. Easy on your back and ladder.



1. Tent-Frame Holder Part# TS22

A specially designed tent-frame holder that mounts onto the side of the TS ladder rails. Solid construction.

Includes:

- 2 x tent-frame brackets
- 2 x bump-stop brackets
- 2 x tiedowns

2. Quick Release Strap Part# TS27

The most secure and fastest way of holding ladders. Simply place strap around ladder rungs and pull tight. Ratchet buckle releases quickly. Includes:

- Quick release ratchet buckle & mount
- Fixed buckle & mount
- Strap
- Fits to roof racks TR & TRT

3. Aerial & Spot light Holder Part# TS23

Designed to attach to the crossbar with predrilled hole for aerial or spotlight.

- Solid steel construction
- Supplied singly
- Fits to roof racks TR & TRT

4. Beacon Plate Bracket Part# TS25

Mount a beacon to the side of the ladder rail system

- Aluminium construction
- Supplied singly

5. Conduit Clamp Part# TS24

Clamp can be mounted to the side of the ladder system or crossbar

- Aluminium construction
- Supplied as a pair
- Fits 100mm diameter conduit

